

# Traveling The Yukon Quest Trail as a Handler or Spectator

First and foremost: please be good neighbors. The Yukon Quest is a huge event that passes through small communities once a year. Respect the fact that many people live in these communities and are just trying to go about their lives despite the race that is going on. Also, inject some money into their local economies as a means of saying thank you for allowing us to continue to use their facilities.

## Two Rivers Checkpoint



### Getting there

- The checkpoint is located at the Pleasant Valley Community Center at mile 23.5 of Chena Hot Spring Road.
- Although the speed limit on Chena Hot Springs Road in the area is 45 or 50 mph, with all the commotion, people pulling off on the side of the road, and the signs we put out for the crossing, it seems like generally everyone slows down a lot to 25/30 mph in the area, and that is definitely preferable.
- There aren't many places to pass safely in this area so if someone is really slow they should pull off onto a side road to let others pass.
- **EVERYONE SHOULD ALWAYS KEEP AN EYE OUT FOR DOG TEAMS!** The trail crosses a bunch of these side roads and these crossings are NOT regulated.

- The Trail crosses Chena Hot Springs Road at mile 27. This crossing is controlled by volunteers, however, vehicles always should assume that a team is coming, and proceed with extreme caution.
- There is cell service at the checkpoint, but, it gets spotty pretty quickly down near the road crossing.

### Parking

- Parking is extremely limited! The checkpoint DOES NOT have room for parking for anyone besides the handlers, volunteers, and race officials.
- Cory Ranch Road and Anders Ave (see map) are very narrow and it would be best if no one parked on those so handlers, volunteers, and race officials can come and go from the checkpoint. The dog teams come in from Joyce Jean Drive, so cars should not be parking over there either.
- Be considerate that people live on all the streets in the area and may be trying to just go about their life. Parking at the Pleasant Valley Store and the little shopping area by Missing Moose are the best options.

### Places to Eat

- The Pleasant Valley Store, right next to the checkpoint, (open 9am-8pm) has gas and some convenient store type items.
- The Missing Moose Cafe (open 9am - 4:30/5pm) has coffee and food as well.
- Wagner's Pizza Bus, on Anders Ave. off Zuendel St. at mile 24 CHSR 1-8pm on weekends.

## Mile 101 Checkpoint



## Getting there

- Located at mile 101 on the Steese highway, between 12-Mile and Eagle Summit.
- There is no cell service past about mile 22 on the Steese highway, and very little in the way of help. Be prepared for winter driving: bring arctic gear with you, a shovel, spare tire, gravel, and extra food and water. Another means of communication (sat phone or GPS device) is strongly recommended.
- The Department of Transportation maintains the road during the day, but in the evenings and over night, there is no regular maintenance.
- The summits are treacherous even for people who are very comfortable with rural Alaska driving; they are notoriously windy and drifts accumulate on the road very quickly.
- Convoying up with other vehicles is the safest means of travel.

## Checkpoint

- The checkpoint itself consists of an ATCO trailer generously donated by Summit Logistics.
- There are cabins on the site, but they are off-limits because of permitting.
- Parking in front of the ATCO trailer is for vets and officials. The way this driveway is set up, it gets congested very easily. Please be courteous about leaving a path for people to turn around and leave. This may mean walking up to the checkpoint from the lower pull-out.
- There are no food options for handlers or spectators here due to the temporary nature and lack of infrastructure of the checkpoint.

## Central Checkpoint



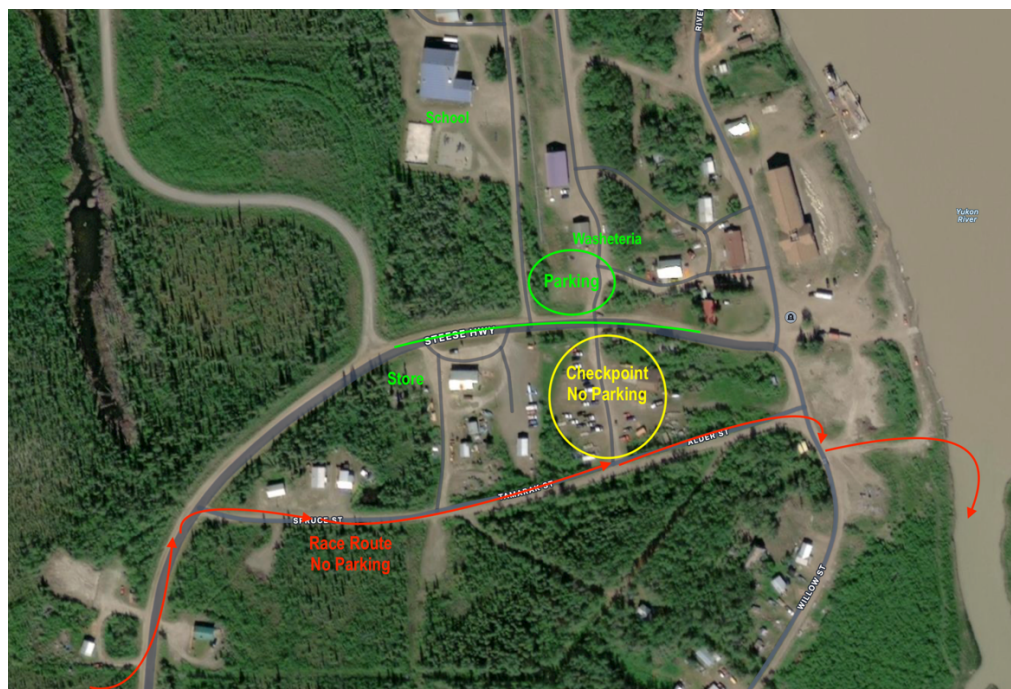
Getting There:

- Located at “the Corner” – Gold Country Services (Skookem Roadhouse) restaurant/bar/hotel – at the intersection of the Steese Highway and Circle Hot Springs Rd in Central, AK
- Eagle Summit is a windy, cliffside pass. Drive at your comfort level, and use pullouts when necessary.
- The trail crosses the road at mile 116.3 on the north side of Eagle Summit. This is an uncontrolled crossing. BE AWARE OF YOUR LOCATION AND WATCH FOR DOG TEAMS!
- The trail comes onto and follows the road a mile before the checkpoint. DO NOT TRY AND PASS A TEAM IN THE ROAD.

## Checkpoint

- Parking is extremely limited in front of the restaurant. Parking on the road is preferable, but please make sure that there is ample room for vehicles and teams to move around, both on the Steese Hwy and Circle Hot Spring Rd, as teams will come from both directions during the race.
- This is a both a checkpoint and the finish line for the 200 mile race, so there will be a lot of activity.
- Gold Country Services serves as the checkpoint headquarters. It is a restaurant, bar, convenience store, and gas station. They are very busy during the race; please make a suitably-sized purchase to “pay” for your table.

## Circle City Checkpoint



### Getting there:

- The distance from Central to Circle is only 34 miles, but the road is very twisty and windy – it takes every minute of an hour to make that trip, longer if the road is slick. Slow down and take your time.
- The bridge over Birch Creek midway between the two villages is a great place to watch teams come through. Do not stop on the bridge, but park on either side and walk.
- The trail comes onto the road just before town, and passes along the smaller roads to the firehall.
- Locals live on these smaller roads and will be driving along the same route as the trail, but visiting vehicles should stay on the Steese Highway and come along the back side of the checkpoint.
- Only vets and officials will be allowed to park in the checkpoint area in front of the firehall. Parking is available on the Steese, and in the open area next to the washeteria. Please leave sufficient room for vehicles and potentially dog teams to pass through.

### Facilities in Circle

- Sonya's Bed and Breakfast on the outside of town has a few rooms available (907) 773-8272 or (907) 750-8260 and on Air BnB.
- HC general store has general convenience items and both gas and diesel are available. Hours: 8am to 6pm (907) 773-1222
- The school is offering sleeping space in the gym for a small fee, as well as internet access and bolt head plug-ins for donation. (907) 773-1250
- Often, the school sets up a bake sale as a fundraiser, but there are no restaurants in Circle.

## Eagle Checkpoint

### Getting there:

- Eagle is not connected by a year-round maintained road, so the only way to get there is by air. Everts Air Alaska has regular flights from Fairbanks.

### Facilities in Eagle

- The checkpoint itself is located at the old school house off the Taylor Highway, it is a relatively small building capable of housing the checkpoint, but not much else.
- There is no cell service in Eagle, but there is internet available at the library, please consider making a donation for the use of their facilities.

- There are multiple places to stay in Eagle, including the Falcon Inn Bed & Breakfast (907-547-2254), and Eagle Trading Company (907-547-7000, or 907-547-2220), which also has a small café, and some grocery items.
- As a small community, most things are within easy walking distance, however, the airport is a little bit of a hike, consider finding a ride after you land.

## Chicken Checkpoint

Getting there:

- Chicken is a very small seasonal community without winter road access. The airport is plowed and chartered planes can land there.
- There are no facilities in Chicken in the winter aside from the checkpoint, which is very small and unable to accommodate anyone not involved with the race. You will need to bring all your shelter and supplies with you.
- If you choose to ride to Chicken via snowmachine, be aware that the Taylor highway is also the trail. MAINTAIN AN EASY PACE THAT ALLOWS FOR STOPPING SHOULD YOU MEET A TEAM ON THE ROAD. If you do meet an oncoming team, pull over immediately and turn off your engine. If you come up on a team traveling in the same direction as you, slow down to their pace, and make sure the musher knows you are there. Wait for a good passing area, and let the musher signal you to come around. Do so at an easy pace and give as much room as possible to avoid spooking the dogs.

## Tok Finish



### Getting there:

- Located in the Fast Eddy's parking lot at mile 1313 on the Alaska Highway.
- This is about a 4 hour drive from Fairbanks, 2 hours from Delta Junction.
- The highway is well maintained, however, as a paved highway, there are often very large semi-trucks traveling back and forth at all hours of the day and night.
- Many of the trucks travel at the speed limit, and are slow to get up hills. Be careful passing, and try to do so in designated passing lanes as opposed to against oncoming traffic.
- There are many "dead-zones" along the highway with no cell service.

### Facilities in Tok

- Tok is a full town with grocery stores and multiple gas stations.
- There is cell phone service in Tok.

### Checkpoint

- The finish line will be in the parking lot of Fast Eddy's Restaurant and Youngs Motel. This is also the parking lot for Auntie Helena's and Bears Den Lounge. Please be aware of all the businesses that are operating in this area, and that many of the large trucks on the highway also utilize this parking lot. Leave space for vehicles to turn around and get by.
- While the Yukon Quest Alaska is a great race and a lot of people in Tok are really excited about it, there are plenty of folks who will have no idea that the race is going on at all, so please be courteous, and pull into parking lots if you need to stop.